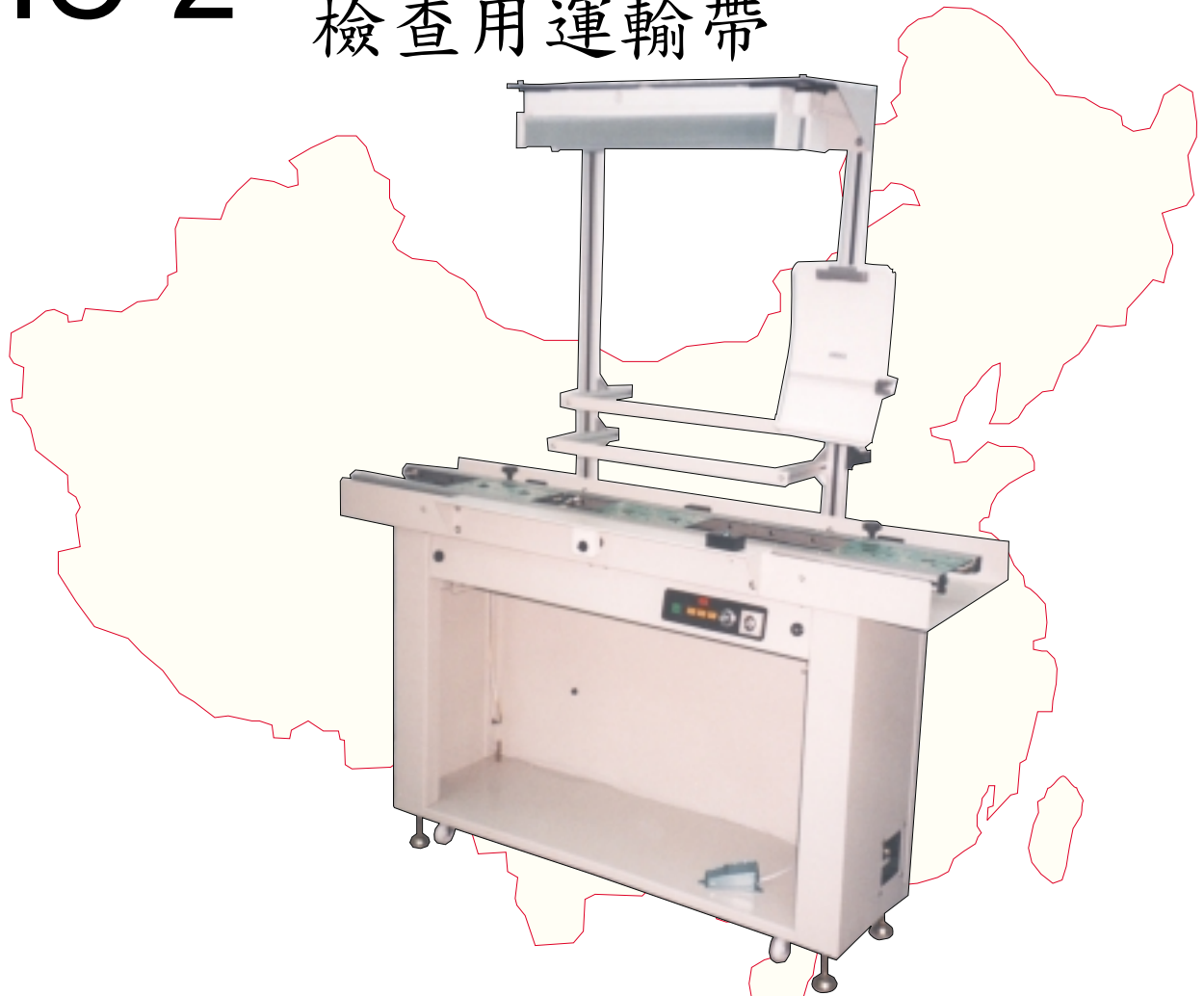


# IC-2

# INSPECTION CONVEYOR

## 檢查用運輸帶

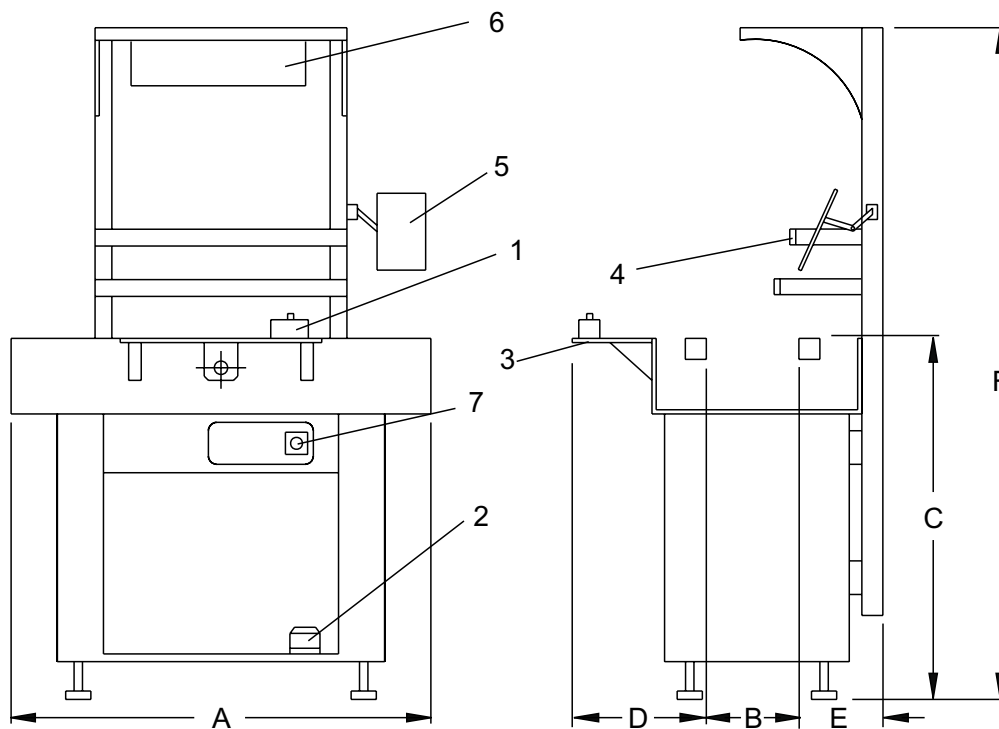


### CHARACTERISTICS

- \* Parallelism of the conveyor can be kept within 0.5/1000mm.
- \* Multiple board stops can be added to improve productivity.
- \* Adoption of PLC allows ease of future expansion or modification.
- \* Compatible with SMEMA or contact type machine interface.
- \* Use of low voltage electrical devices for safety operation.
- \* Options for inspection, working table, component container holders, document holder, lighting, hand button, foot pedal switch, timer ....., are available.
- \* Suitable for Auto or Manual Insertion and SMT lines.
- \* Reversible board transfer function provides flexible connection.
- \* Self-diagnostic function supervises board-jamming problem.
- \* Conveyor belt can stop automatically when conveyor is idle.

### 特點

- \* 運輸帶之平行度為 0.5/1000mm.
- \* 可多加儲板位置,提升生產力.
- \* PLC 控制,擴展及更改更容易.
- \* 適用於 SMEMA 標準及接點式通信.
- \* 全部電器元件皆以 DC24V 或以下操作,確保安全.
- \* 可附加上工作台面,零件掛放裝置,文件架,照明光管,手掣,腳掣,時間掣等.以作檢查線路板之用.
- \* 適用於 AI, MI 及 SMT 流水線.
- \* 可選擇送板方向.
- \* 自我監察送板順暢程式.
- \* 等候時運輸帶自動停止.



SPECIFICATION		規格	
A		mm	≥1000
B	Board width	基板寬度	mm 25~250/355
C		mm	735~790 880~935 930~985
Board transfer direction		送板方向	← / →
Adjustable transfer speed		可調速度	mm/sec 120~280 240~600
No. of buffer(s)		儲板數量	≥ 1
Edge clearance		承托基板寬度	mm 3.5/4.5
No. of sensors		電眼數量	≥ 3
Power supply		電源	vac 110/220
1. Hand button		手掣	
2. Foot pedal switch		腳掣	
3. Working table		工作台面	
4. Component container holders		零件掛放裝置	
5. Document holder		文件架	
6. Lighting		照明光管	
7. Timer		時間掣	
D		mm	130
E		mm	150
F		mm	1800


**SMartop Technology Limited**  
**創盛科技有限公司**

Flat B, 9/F., Wing Yip Ind. Bldg., 21-27 Wing Yip St.,  
Kwai Chung, N.T., Hong Kong.

香港辦事處：Tel : (852) 2790 4433/2790 4438

Fax : (852) 2790 5918

Email : sales@smartop.com,hk

中國辦事處：Tel : 86-769-556 1321/86-769-556 5921

Fax : 86-769-556 7183

Email : dg.sales@smartop.com.hk

